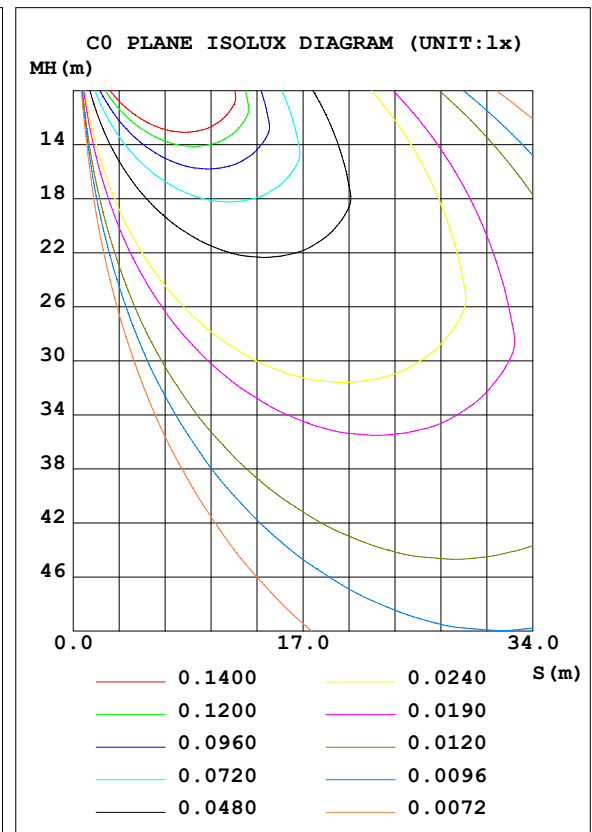
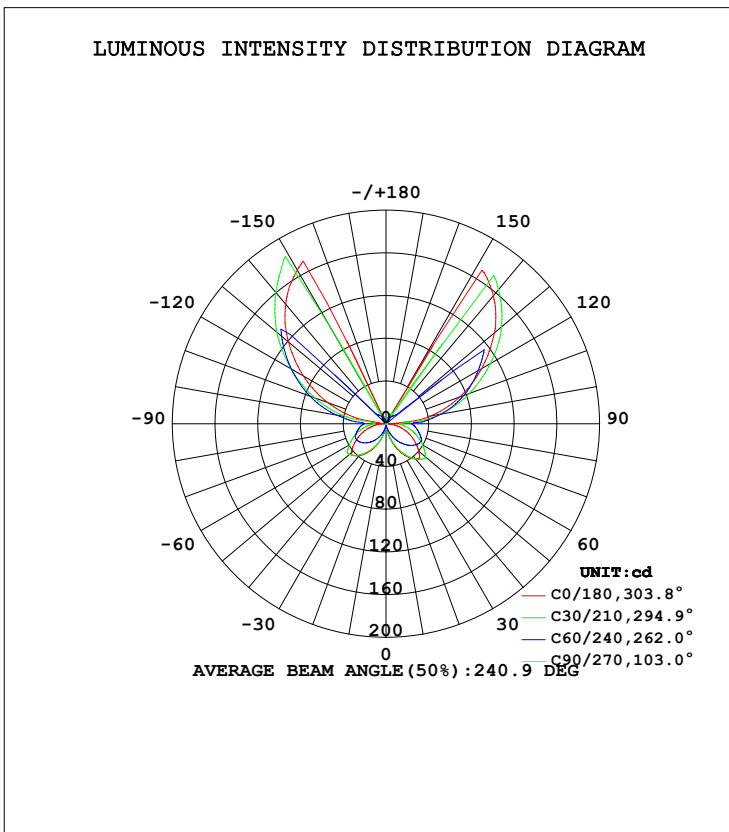


LUMINAIRE PHOTOMETRIC TEST REPORT

NAME: Niteo A	TYPE:	WEIGHT:
DIM.:	SPEC.:	SERIAL No.:
MFR.: DOBAC	SUR.:	PROTECTION ANGLE:

DATA OF LAMP		PHOTOMETRIC DATA			
MODEL	Niteo A	Imax (cd)	264.7	S/MH (C0/180)	0.06
NOMINAL POWER (W)	12	LOR (%)	30.0	S/MH (C90/270)	4.04
RATED VOLTAGE (V)	220	TOTAL FLUX (lm)	519.26	η UP, DN (C0-180)	10.8, 4.1
NOMINAL FLUX (lm)	1731.54	CIE CLASS	SEMI-IND.	η UP, DN (C180-360)	10.7, 4.3
LAMPS INSIDE	1	η up (%)	21.5	CIBSE SHR NOM	0.75
TEST VOLTAGE (V)	219.9	η down (%)	8.5	CIBSE SHR MAX	0.75



C Range: 0 - 360DEG
 C Interval: 10.0DEG
 Test Speed: HIGH
 Temperature: 25.3DEG
 Operators: DOBAC
 Test Date: 2017-11-28

γ Range: 0 - 180DEG
 γ Interval: 1.0DEG
 Test System: EVERFINE GO-2000B_V1 SYSTEM V1.0.260
 Humidity: 65.0%
 Test Distance: 6.960m [K=1.0000]
 Remarks:

ZONAL FLUX DIAGRAM

ZONAL FLUX DIAGRAM:

γ	C0	C45	C90	C135	C180	C225	C270	C315	γ	Φ zone	Φ total	Φ lum,lamp
10	6.858	4.694	0.1860	3.358	6.596	3.754	0.1666	4.240	0- 10	0.1912	0.1912	0.04,0.01
20	17.85	13.72	0.2148	11.62	20.14	14.12	0.1425	11.80	10- 20	2.499	2.690	0.52,0.16
30	29.29	23.12	0.2280	21.12	33.29	25.65	0.1227	19.79	20- 30	8.166	10.86	2.09,0.63
40	38.96	31.95	0.2719	29.98	43.03	36.18	0.1118	27.34	30- 40	16.48	27.33	5.26,1.58
50	42.49	38.60	0.3944	35.05	40.05	43.72	0.1205	33.05	40- 50	25.19	52.52	10.1,3.03
60	32.99	39.59	0.3880	30.83	30.23	42.39	0.3810	33.25	50- 60	29.18	81.70	15.7,4.72
70	22.80	32.30	0.2521	24.00	19.83	34.16	0.7712	26.93	60- 70	27.40	109.1	21,6.3
80	12.36	24.14	0.3901	16.94	9.574	25.82	1.069	20.22	70- 80	22.27	131.4	25.3,7.59
90	2.644	15.68	0.4581	12.37	3.582	18.80	1.045	13.18	80- 90	15.60	147.0	28.3,8.49
100	22.38	44.19	0.5413	43.19	42.70	54.71	1.284	29.85	90-100	22.67	169.6	32.7,9.8
110	57.92	78.07	0.4515	67.95	73.45	85.51	0.8652	56.16	100-110	51.97	221.6	42.7,12.8
120	89.13	110.3	0.5260	91.43	103.3	115.0	0.7350	80.80	110-120	73.01	294.6	56.7,17
130	119.2	140.0	0.4141	112.9	132.6	141.8	0.9179	104.9	120-130	83.52	378.1	72.8,21.8
140	146.0	163.9	0.3286	74.40	156.5	94.32	1.019	121.6	130-140	78.84	457.0	88,26.4
150	166.2	10.62	0.2722	7.253	15.59	8.942	0.9512	8.719	140-150	52.06	509.0	98,29.4
160	7.786	6.864	0.3113	4.187	6.405	4.963	0.8614	5.712	150-160	9.009	518.1	99.8,29.9
170	3.872	3.254	0.3089	1.103	2.145	1.158	0.6053	2.890	160-170	1.094	519.1	100,30
180	0.0744	0.0908	0.1578	0.1673	0.0791	0.0867	0.1622	0.1705	170-180	0.1190	519.3	100,30
DEG	LUMINOUS INTENSITY:cd									UNIT:lm		

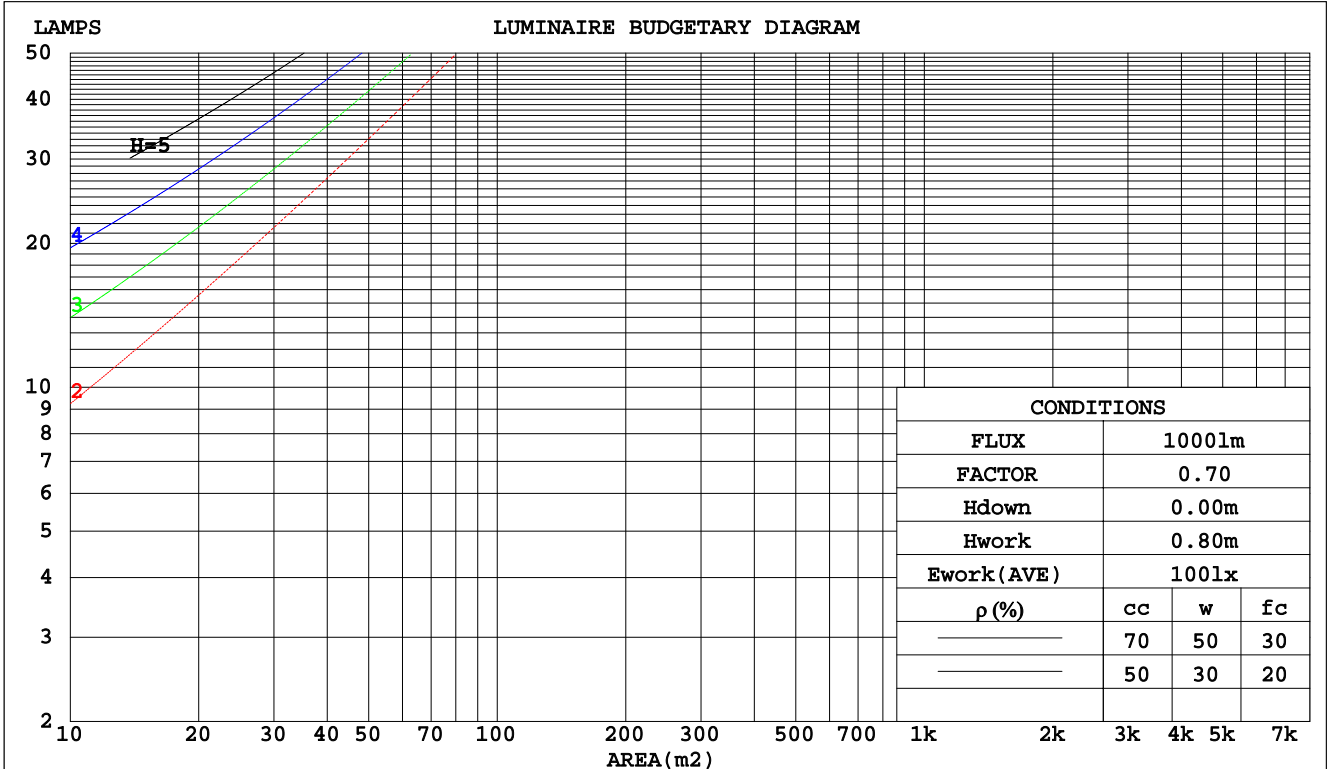
C Range: 0 - 360DEG
C Interval: 10.0DEG
Test Speed: HIGH
Temperature:25.3DEG
Operators:DOBAC
Test Date:2017-11-28

γ Range: 0 - 180DEG
 γ Interval: 1.0DEG
Test System:EVERFINE GO-2000B_V1 SYSTEM V1.0.260
Humidity:65.0%
Test Distance:6.960m [K=1.0000]
Remarks:

CU AND LUMINAIRE BUDGETARY ESTIMATE DIAGRAM

NAME: Niteo A	TYPE:	WEIGHT:
DIM.:	SPEC.:	SERIAL No.:
MFR.: DOBAC	SUR.:	PROTECTION ANGLE:

pcc	80%			70%			50%			30%			10%			0
pw	50%	30%	10%	50%	30%	10%	50%	30%	10%	50%	30%	10%	50%	30%	10%	0
pfc	20%			20%			20%			20%			20%			0
RCR	RCR:Room Cavity Ratio						Coefficients of Utilization(CU)									
0.0	.31	.31	.31	.27	.27	.27	.21	.21	.21	.16	.16	.16	.11	.11	.11	.08
1.0	.26	.25	.23	.23	.22	.21	.18	.17	.16	.13	.13	.12	.09	.08	.08	.06
2.0	.22	.20	.18	.20	.18	.17	.15	.14	.13	.11	.10	.10	.07	.07	.06	.05
3.0	.19	.17	.15	.17	.15	.13	.13	.12	.11	.10	.09	.08	.06	.06	.05	.03
4.0	.17	.14	.12	.15	.13	.11	.11	.10	.09	.08	.07	.06	.05	.05	.04	.03
5.0	.15	.12	.10	.13	.11	.09	.10	.08	.07	.07	.06	.05	.05	.04	.03	.02
6.0	.13	.11	.09	.12	.09	.08	.09	.07	.06	.06	.05	.04	.04	.03	.03	.02
7.0	.12	.09	.07	.10	.08	.07	.08	.06	.05	.06	.05	.04	.04	.03	.02	.01
8.0	.10	.08	.06	.09	.07	.06	.07	.06	.05	.05	.04	.03	.03	.03	.02	.01
9.0	.09	.07	.06	.08	.06	.05	.07	.05	.04	.05	.04	.03	.03	.02	.02	.01
10.0	.09	.06	.05	.08	.06	.04	.06	.04	.03	.04	.03	.02	.03	.02	.01	.01



C Range: 0 - 360DEG
C Interval: 10.0DEG
Test Speed: HIGH
Temperature: 25.3DEG
Operators: DOBAC
Test Date: 2017-11-28

γ Range: 0 - 180DEG
γ Interval: 1.0DEG
Test System: EVERFINE GO-2000B_V1 SYSTEM V1.0.260
Humidity: 65.0%
Test Distance: 6.960m [K=1.0000]
Remarks:

WEC AND CCEC

NAME: Niteo A	TYPE:	WEIGHT:
DIM.:	SPEC.:	SERIAL No.:
MFR.: DOBAC	SUR.:	PROTECTION ANGLE:

ρcc	80%			70%			50%			30%			10%			0
ρw	50%	30%	10%	50%	30%	10%	50%	30%	10%	50%	30%	10%	50%	30%	10%	0
ρfc	20%			20%			20%			20%			20%			0
RCR	RCR:Room Cavity Ratio						Wall Exitance Coefficients(WEC)									
0.0																
1.0	.095	.054	.017	.087	.050	.016	.071	.041	.013	.056	.032	.010	.042	.024	.008	
2.0	.085	.047	.014	.077	.043	.013	.063	.035	.011	.049	.027	.009	.036	.021	.006	
3.0	.077	.041	.012	.070	.037	.011	.056	.031	.009	.044	.024	.007	.032	.018	.005	
4.0	.070	.037	.011	.064	.033	.010	.051	.027	.008	.040	.021	.006	.029	.016	.005	
5.0	.065	.033	.010	.058	.030	.009	.047	.024	.007	.036	.019	.006	.026	.014	.004	
6.0	.060	.030	.009	.054	.027	.008	.043	.022	.006	.033	.017	.005	.024	.013	.004	
7.0	.055	.027	.008	.050	.025	.007	.040	.020	.006	.031	.016	.005	.022	.011	.003	
8.0	.051	.025	.007	.047	.023	.006	.037	.019	.005	.029	.014	.004	.020	.010	.003	
9.0	.048	.023	.006	.044	.021	.006	.035	.017	.005	.027	.013	.004	.019	.010	.003	
10.0	.045	.022	.006	.041	.020	.006	.033	.016	.005	.025	.012	.004	.018	.009	.003	

ρcc	80%			70%			50%			30%			10%			0
ρw	50%	30%	10%	50%	30%	10%	50%	30%	10%	50%	30%	10%	50%	30%	10%	0
ρfc	20%			20%			20%			20%			20%			0
RCR	RCR:Room Cavity Ratio						Ceiling Cavity Exitance Coefficients(CCEC)									
0.0	.221	.221	.221	.189	.189	.189	.129	.129	.129	.074	.074	.074	.024	.024	.024	
1.0	.219	.212	.205	.188	.182	.177	.128	.125	.122	.074	.072	.071	.024	.023	.023	
2.0	.218	.206	.196	.186	.177	.169	.128	.123	.118	.074	.071	.069	.024	.023	.023	
3.0	.216	.201	.190	.185	.174	.165	.127	.121	.116	.073	.070	.068	.024	.023	.022	
4.0	.214	.198	.186	.184	.171	.162	.126	.119	.114	.073	.070	.067	.023	.023	.022	
5.0	.212	.195	.183	.182	.169	.159	.125	.118	.113	.073	.069	.067	.023	.023	.022	
6.0	.210	.193	.181	.181	.167	.158	.125	.117	.112	.072	.069	.066	.023	.023	.022	
7.0	.208	.192	.180	.179	.166	.157	.124	.116	.111	.072	.069	.066	.023	.022	.022	
8.0	.207	.190	.179	.178	.165	.156	.123	.116	.111	.072	.068	.066	.023	.022	.022	
9.0	.205	.189	.178	.177	.164	.155	.122	.115	.110	.071	.068	.066	.023	.022	.022	
10.0	.204	.188	.177	.175	.163	.155	.122	.115	.110	.071	.068	.066	.023	.022	.022	

C Range: 0 - 360DEG
 C Interval: 10.0DEG
 Test Speed: HIGH
 Temperature: 25.3DEG
 Operators: DOBAC
 Test Date: 2017-11-28

γ Range: 0 - 180DEG
 γ Interval: 1.0DEG
 Test System: EVERFINE GO-2000B_V1 SYSTEM V1.0.260
 Humidity: 65.0%
 Test Distance: 6.960m [K=1.0000]
 Remarks:

Uncorrected UGR Table

NAME: Niteo A		TYPE:					WEIGHT:				
DIM.:		SPEC.:					SERIAL No.:				
MFR.: DOBAC		SUR.:					PROTECTION ANGLE:				
ceiling/cavity	0.7	0.7	0.5	0.5	0.3	0.7	0.7	0.5	0.5	0.3	
walls	0.5	0.3	0.5	0.3	0.3	0.5	0.3	0.5	0.3	0.3	
working plane	0.2	0.2	0.2	0.2	0.2	0.2	0.2	0.2	0.2	0.2	
Room dimensions	Viewed crosswise					Viewed endwise					
x = 2H y = 2H	19.7	20.6	20.8	21.6	23.1	13.2	14.0	14.2	15.1	16.6	
3H	21.7	22.4	22.7	23.5	25.0	14.3	15.1	15.4	16.2	17.7	
4H	22.5	23.2	23.6	24.3	25.8	14.7	15.4	15.8	16.5	18.0	
6H	23.3	23.9	24.4	25.0	26.5	15.0	15.6	16.1	16.7	18.3	
8H	23.6	24.2	24.7	25.3	26.8	15.1	15.7	16.2	16.8	18.3	
12H	23.8	24.4	24.9	25.5	27.1	15.2	15.8	16.3	16.9	18.4	
4H 2H	20.1	20.9	21.2	21.9	23.4	16.6	17.3	17.7	18.4	19.9	
3H	22.4	23.0	23.5	24.1	25.6	18.5	19.1	19.6	20.2	21.7	
4H	23.5	24.0	24.6	25.1	26.7	19.3	19.9	20.4	21.0	22.5	
6H	24.4	24.9	25.5	26.0	27.6	20.0	20.5	21.1	21.6	23.2	
8H	24.8	25.2	25.9	26.4	28.0	20.2	20.6	21.3	21.8	23.3	
12H	25.2	25.6	26.3	26.7	28.3	20.3	20.7	21.5	21.9	23.4	
8H 4H	23.8	24.3	25.0	25.4	27.0	21.0	21.4	22.1	22.5	24.1	
6H	25.1	25.5	26.3	26.6	28.2	22.4	22.8	23.6	23.9	25.5	
8H	25.7	26.0	26.9	27.2	28.8	23.1	23.5	24.3	24.6	26.2	
12H	26.3	26.6	27.4	27.7	29.3	23.7	24.0	24.9	25.2	26.8	
12H 4H	23.9	24.3	25.0	25.4	27.0	21.2	21.6	22.4	22.8	24.3	
6H	25.3	25.6	26.5	26.8	28.4	22.9	23.3	24.1	24.4	26.0	
8H	26.0	26.3	27.2	27.5	29.1	23.9	24.2	25.1	25.4	27.0	
Variations with the observer position at spacings:											
S = 1.0H	+ 0.1 / - 0.1					+ 0.1 / - 0.1					
1.5H	+ 0.2 / - 0.3					+ 0.1 / - 0.1					
2.0H	+ 0.2 / - 0.4					+ 0.3 / - 0.3					

CIE Pub.117 Corrected 1732 lm Total Lamp Luminous Flux. (8log(F/F0) = 1.9)

C Range: 0 - 360DEG
C Interval: 10.0DEG
Test Speed: HIGH
Temperature: 25.3DEG
Operators: DOBAC
Test Date: 2017-11-28

γ Range: 0 - 180DEG
γ Interval: 1.0DEG
Test System: EVERFINE GO-2000B_V1 SYSTEM V1.0.260
Humidity: 65.0%
Test Distance: 6.960m [K=1.0000]
Remarks:

UTILIZATION FACTORS TABLE

NAME: Niteo A	TYPE:	WEIGHT:
DIM.:	SPEC.:	SERIAL No.:
MFR.: DOBAC	SUR.:	PROTECTION ANGLE:

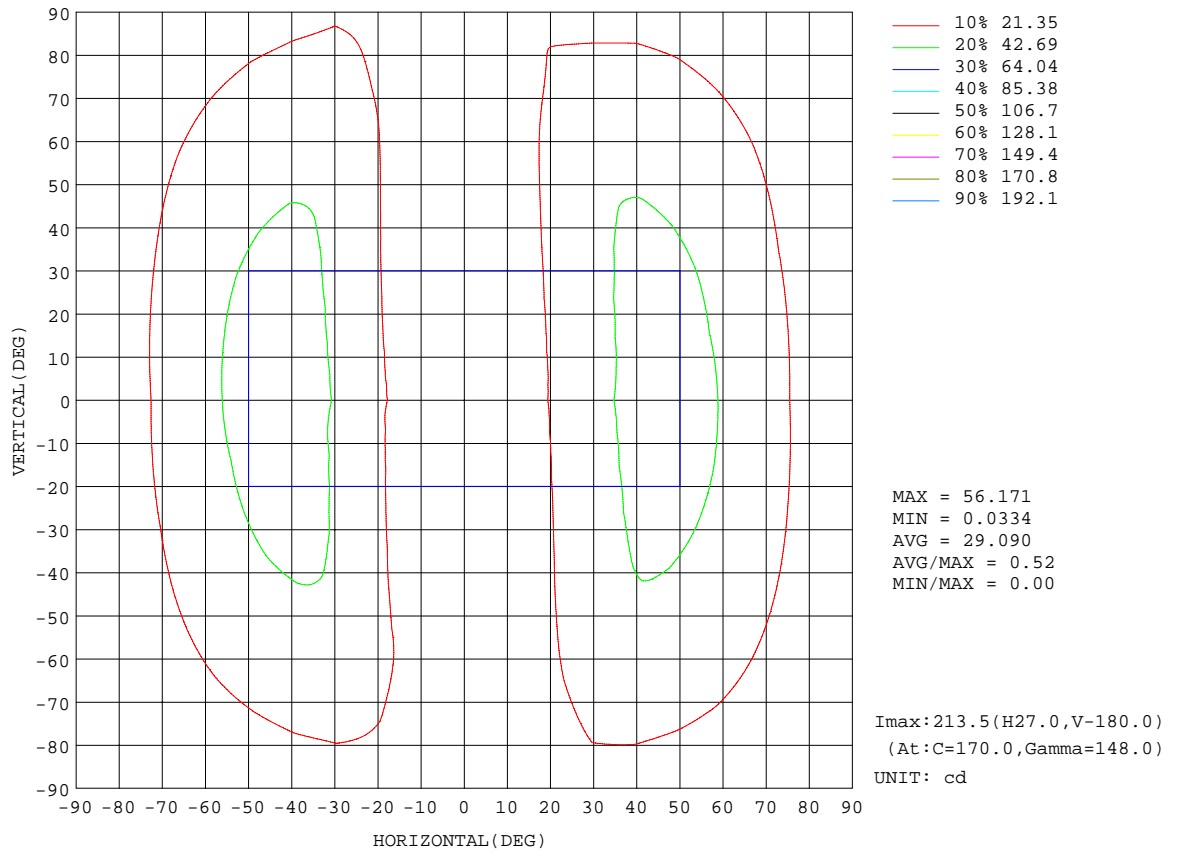
REFLECTANCE										
Ceiling	0.8	0.8	0.8	0.7	0.7	0.7	0.5	0.5	0.5	0
Walls	0.7	0.5	0.3	0.7	0.5	0.3	0.7	0.5	0.3	0
Working plane	0.2	0.2	0.2	0.2	0.2	0.2	0.2	0.2	0.2	0
ROOM INDEX	UTILIZATION FACTORS(PERCENT) $k(RI) \times RCR = 5$									
k = 0.60	10	6	4	9	6	4	7	5	3	1
0.80	13	9	6	11	8	6	9	7	5	2
1.00	15	11	8	13	10	8	11	8	6	2
1.25	17	13	11	15	12	10	12	10	8	3
1.50	19	15	12	17	13	11	13	11	9	3
2.00	21	18	15	19	16	14	15	13	11	4
2.50	22	19	17	20	17	15	16	14	12	5
3.00	24	21	19	21	19	17	17	15	13	5
4.00	25	23	21	23	20	19	18	16	15	6
5.00	26	24	22	23	22	20	18	17	16	6
ROOM INDEX	UF(total)									Direct
According to DIN EN 13032-2 2004			Suspended				SHRNOM = 1.25			

C Range: 0 - 360DEG
 C Interval: 10.0DEG
 Test Speed: HIGH
 Temperature: 25.3DEG
 Operators: DOBAC
 Test Date: 2017-11-28

γ Range: 0 - 180DEG
 γ Interval: 1.0DEG
 Test System: EVERFINE GO-2000B_V1 SYSTEM V1.0.260
 Humidity: 65.0%
 Test Distance: 6.960m [K=1.0000]
 Remarks:

ISOCANDELA DIAGRAM

NAME: Niteo A	TYPE:	WEIGHT:
DIM.:	SPEC.:	SERIAL No.:
MFR.: DOBAC	SUR.:	PROTECTION ANGLE:

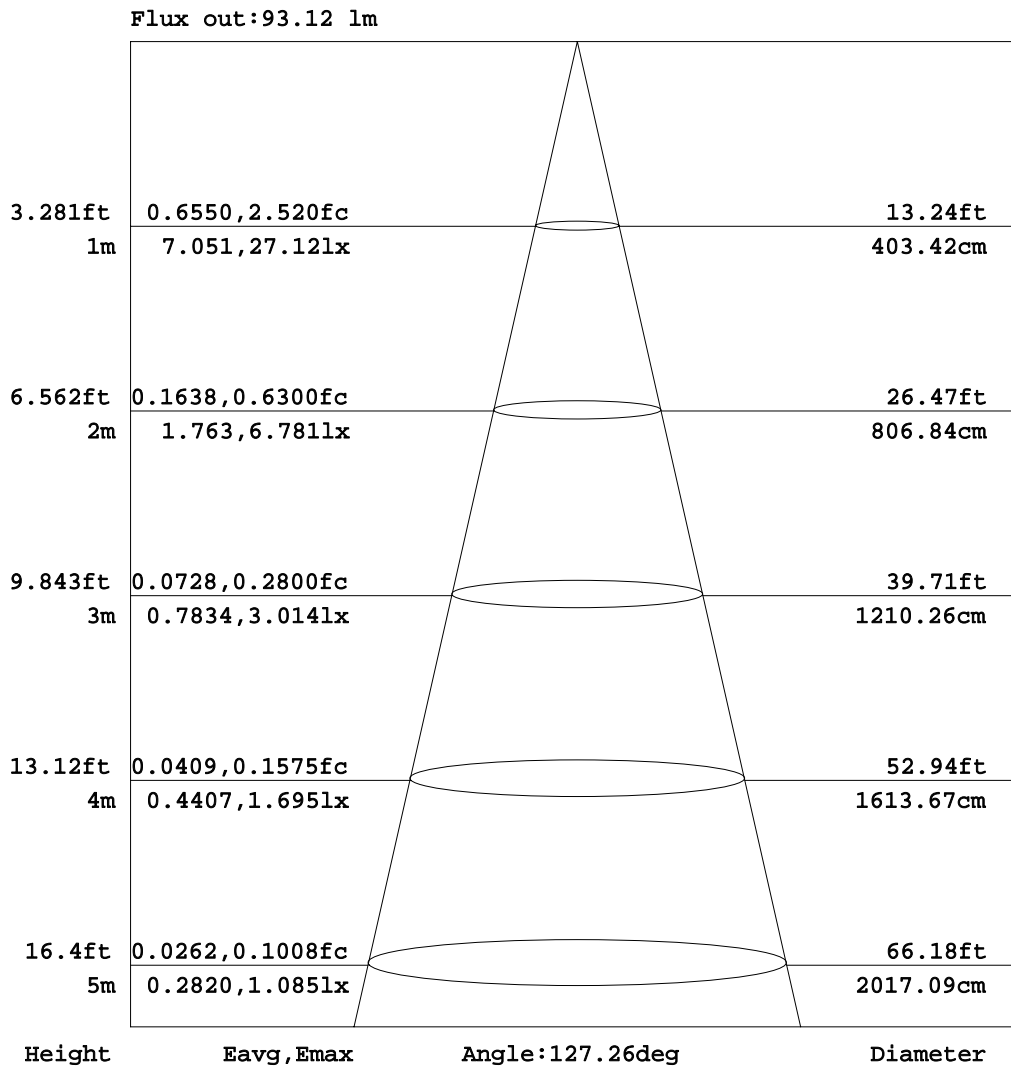


C Range: 0 - 360DEG
 C Interval: 10.0DEG
 Test Speed: HIGH
 Temperature: 25.3DEG
 Operators: DOBAC
 Test Date: 2017-11-28

γ Range: 0 - 180DEG
 γ Interval: 1.0DEG
 Test System: EVERFINE GO-2000B_V1 SYSTEM V1.0.260
 Humidity: 65.0%
 Test Distance: 6.960m [K=1.0000]
 Remarks:

AAI Figure

NAME: Niteo A	TYPE:	WEIGHT:
DIM.:	SPEC.:	SERIAL No.:
MFR.: DOBAC	SUR.:	PROTECTION ANGLE:



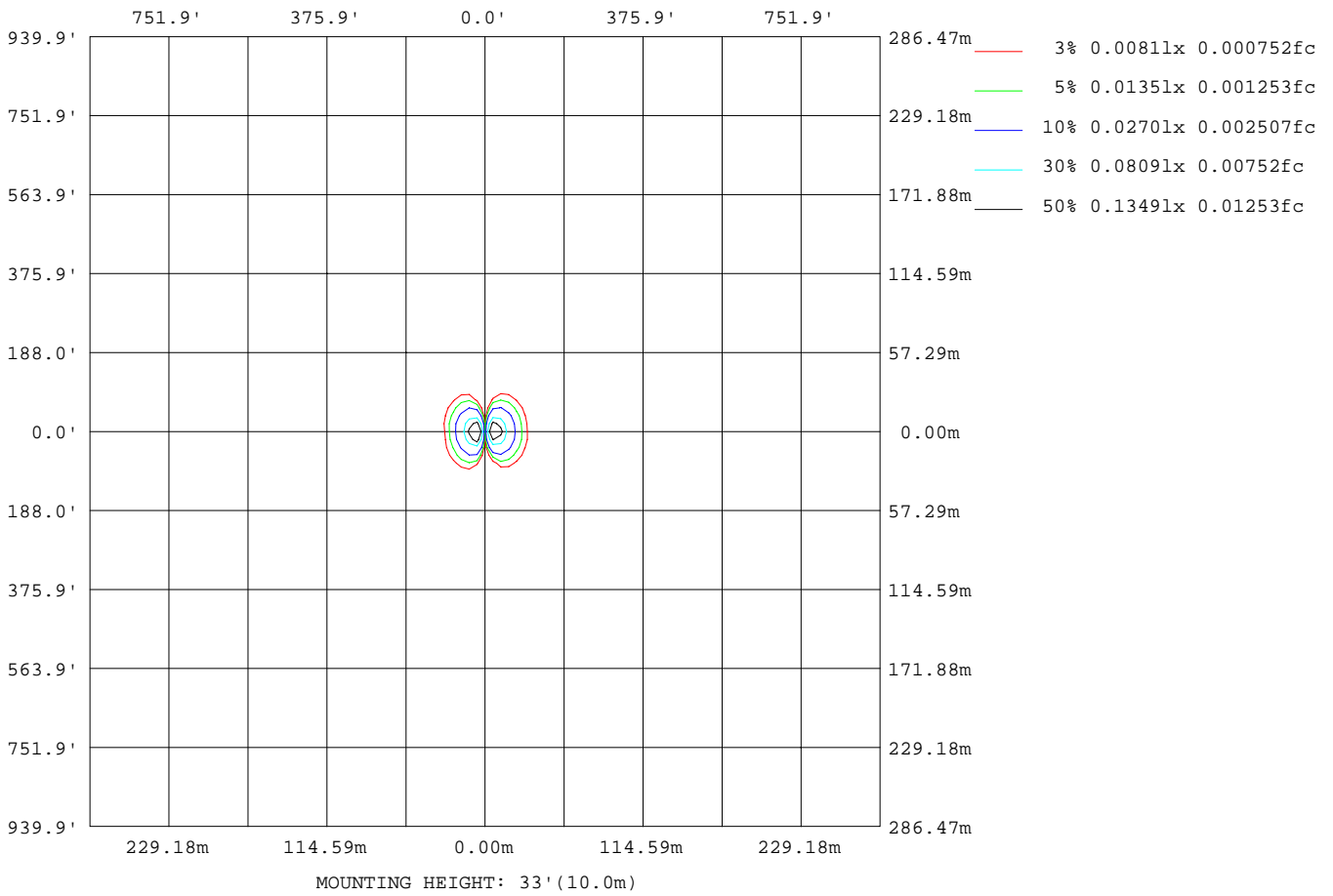
Note: The Curves indicate the illuminated area and the average illumination when the luminaire is at different distance.

C Range: 0 - 360DEG
C Interval: 10.0DEG
Test Speed: HIGH
Temperature: 25.3DEG
Operators: DOBAC
Test Date: 2017-11-28

γ Range: 0 - 180DEG
γ Interval: 1.0DEG
Test System: EVERFINE GO-2000B_V1 SYSTEM V1.0.260
Humidity: 65.0%
Test Distance: 6.960m [K=1.0000]
Remarks:

ISOLUX DIAGRAM

NAME: Niteo A	TYPE:	WEIGHT:
DIM.:	SPEC.:	SERIAL No.:
MFR.: DOBAC	SUR.:	PROTECTION ANGLE:



C Range: 0 - 360DEG
 C Interval: 10.0DEG
 Test Speed: HIGH
 Temperature: 25.3DEG
 Operators: DOBAC
 Test Date: 2017-11-28

γ Range: 0 - 180DEG
 γ Interval: 1.0DEG
 Test System: EVERFINE GO-2000B_V1 SYSTEM V1.0.260
 Humidity: 65.0%
 Test Distance: 6.960m [K=1.0000]
 Remarks:

Average Luminance Table(CIBSE)

NAME: Niteo A	TYPE:	WEIGHT:
DIM.:	SPEC.:	SERIAL No.:
MFR.: DOBAC	SUR.:	PROTECTION ANGLE:

Parameter description for average Luminance	Symbol	Value	Unit
Luminance in Azimuth Plane	Bc	refer Table 2	cd/sq.m.
Intensity at angle Gamma in given azimuth plane	I	from data	cd/klm
Number of lamps	N	1	
Output of each lamp(initial lumens as specified)	F	1731.54	lm
Multiplying factor	K	1	
Luminous area in horizontal plane used in calculations	A	0.0038	sq.m.
Angle to the downward vertical from light centre	Gamma	from data	deg

Table 1. Calculation parameters for determination of CIBSE LG3:1996 Average Luminance

G deg	C plane(deg)																		
	0	10	20	30	40	50	60	70	80	90	100	110	120	130	140	150	160	170	180
55	17373	20940	15849	20193	19319	17748	13690	8575	2492	157	3539	9585	13021	15513	15661	20191	23944	25305	16201
60	17364	21190	16204	20881	20846	20822	16409	10472	3109	204	4951	12206	15065	16276	16179	20595	24077	25115	15909
65	17415	21544	16733	21874	22151	23042	19628	12765	3885	226	6517	14646	16508	17315	16905	21155	24323	24914	15596
70	17543	22179	17565	23390	24137	25660	23214	15828	4939	194	8799	17456	18521	18899	18045	22061	24779	24747	15261
75	17862	23350	19009	26006	27502	30127	28557	20806	6642	366	12263	21986	21957	21653	20038	23766	25741	24749	14897
80	18727	25903	22045	31390	34325	39129	39245	31023	10059	591	17854	31316	28936	27237	24183	27463	28126	25297	14508
85	22185	34414	31727	47981	55157	66037	70842	61844	20134	1311	33909	58893	49664	44138	37019	39316	36512	28409	14364

Table 2. Average Luminance(cd/sq.m.) for defined C plane,Gamma angle

CIBSE Category	Gamma (deg)	Average Luminance		Patch Luminance	
		maximum	specified	maximum	specified
		calculated	maximum	measured	maximum
Category 1	55 to 90	70842	200	---	500
Category 2	65 to 90	70842	200	---	500
Category 3	75 to 90	70842	200	---	500

Table 3. Tabulation of Average and Patch Luminance(cd/sq.m.) for defined CIBSE categories

No match

C Range: 0 - 360DEG
C Interval: 10.0DEG
Test Speed: HIGH
Temperature:25.3DEG
Operators:DOBAC
Test Date:2017-11-28

γ Range: 0 - 180DEG
γ Interval: 1.0DEG
Test System:EVERFINE GO-2000B_V1 SYSTEM V1.0.260
Humidity:65.0%
Test Distance:6.960m [K=1.0000]
Remarks:

Average Luminance Table(CIBSE)

NAME: Niteo A	TYPE:	WEIGHT:
DIM.:	SPEC.:	SERIAL No.:
MFR.: DOBAC	SUR.:	PROTECTION ANGLE:

Parameter description for average Luminance	Symbol	Value	Unit
Luminance in Azimuth Plane	Bc	refer Table 2	cd/sq.m.
Intensity at angle Gamma in given azimuth plane	I	from data	cd/klm
Number of lamps	N	1	
Output of each lamp(initial lumens as specified)	F	1731.54	lm
Multiplying factor	K	1	
Luminous area in horizontal plane used in calculations	A	0.0038	sq.m.
Angle to the downward vertical from light centre	Gamma	from data	deg

Table 1. Calculation parameters for determination of CIBSE LG3:2001 Average Luminance

G deg	C plane(deg)																	
	0	10	20	30	40	50	60	70	80	90	100	110	120	130	140	150	160	170
55	17373209401584920193193191774813690857524921573539958513021155131566120191239442530516201																	
60	1736421190162042088120846208221640910472310920449511220615065162761617920595240772511515909																	
65	1741521544167332187422151230421962812765388522665171464616508173151690521155243232491415596																	
70	1754322179175652339024137256602321415828493919487991745618521188991804522061247792474715261																	
75	17862233501900926006275023012728557208066642366122632198621957216532003823766257412474914897																	
80	187272590322045313903432539129392453102310059591178543131628936272372418327463281262529714508																	
85	2218534414317274798155157660377084261844201341311339095889349664441383701939316365122840914364																	

Table 2. Average Luminance(cd/sq.m.) for defined C plane,Gamma angle

range (deg)	Maximum measured	Average Luminance(cd/sq.m)			
		Maximum limit for screen type & software category used			
		Type I,II screen Some neg.s'ware	Type I,II screen Only pos.s'ware	Type III screen Some neg.s'ware	Type III screen Only pos.s'ware
55 to 90	70842	1000	1500	200	500
65 to 90	70842	1000	1500	200	500

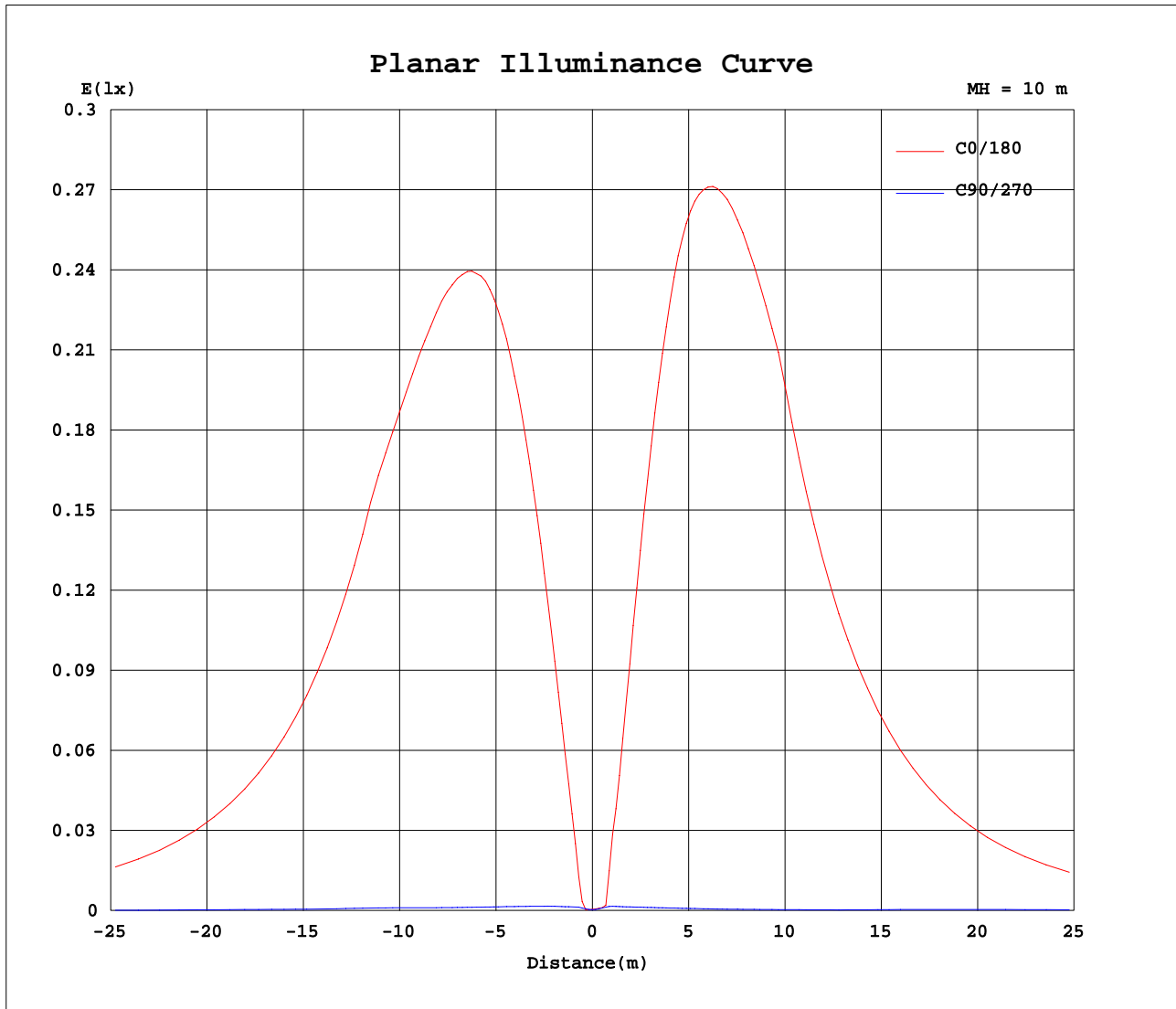
Table 3. Tabulation of average luminance(cd/sq.m.) and luminance limits

No match

C Range: 0 - 360DEG
C Interval: 10.0DEG
Test Speed: HIGH
Temperature:25.3DEG
Operators:DOBAC
Test Date:2017-11-28

γ Range: 0 - 180DEG
γ Interval: 1.0DEG
Test System:EVERFINE GO-2000B_V1 SYSTEM V1.0.260
Humidity:65.0%
Test Distance:6.960m [K=1.0000]
Remarks:

Planar Illuminance Curve



C Range: 0 - 360DEG
 C Interval: 10.0DEG
 Test Speed: HIGH
 Temperature: 25.3DEG
 Operators: DOBAC
 Test Date: 2017-11-28

γ Range: 0 - 180DEG
 γ Interval: 1.0DEG
 Test System: EVERFINE GO-2000B_V1 SYSTEM V1.0.260
 Humidity: 65.0%
 Test Distance: 6.960m [K=1.0000]
 Remarks:

LUMINOUS DISTRIBUTION INTENSITY DATA

NAME: Niteo A	TYPE:	WEIGHT:
DIM.:	SPEC.:	SERIAL No.:
MFR.: DOBAC	SUR.:	PROTECTION ANGLE:

Table--1

UNIT: cd

C(DEG) γ (DEG)	0	10	20	30	40	50	60	70	80	90	100	110	120	130	140	150	160	170	180
0	0.04	0.04	0.04	0.04	0.04	0.04	0.04	0.04	0.04	0.04	0.04	0.04	0.04	0.04	0.04	0.04	0.04	0.04	0.04
5	2.04	1.97	1.23	1.00	0.67	0.32	0.16	0.20	0.17	0.15	0.17	0.17	0.24	0.29	0.33	0.47	0.93	0.93	1.21
10	6.86	7.77	5.60	6.20	5.39	3.91	2.31	0.60	0.17	0.19	0.37	0.90	1.87	2.82	3.87	6.00	8.51	9.50	6.60
15	12.2	14.0	10.1	11.4	9.96	8.33	5.85	2.75	0.17	0.20	0.86	2.41	4.29	6.40	8.32	12.5	17.3	19.5	13.2
20	17.9	20.6	14.7	16.8	14.7	12.6	9.05	4.86	0.39	0.21	1.44	4.33	7.42	10.3	12.9	19.6	26.8	30.2	20.1
25	23.6	27.3	19.6	22.4	19.7	17.0	12.4	7.03	1.12	0.22	2.30	6.71	10.3	14.2	18.1	27.3	36.7	41.1	27.1
30	29.3	33.9	24.3	28.0	24.7	21.4	15.7	9.19	1.91	0.23	3.26	8.84	13.1	18.7	23.4	34.8	45.8	50.8	33.3
35	34.5	40.0	28.7	33.3	29.5	25.7	19.0	11.3	2.69	0.24	4.34	10.6	16.6	23.2	28.3	41.3	53.5	59.3	38.8
40	39.0	45.4	32.6	38.0	33.8	29.9	22.2	13.4	3.46	0.27	5.31	12.6	20.1	27.3	32.5	46.4	59.5	65.8	43.0
45	42.3	49.5	35.6	41.9	37.5	33.5	25.2	15.3	4.19	0.34	6.03	15.4	23.3	31.0	35.4	49.8	63.2	68.7	44.5
50	42.5	50.7	37.5	44.7	40.5	36.5	27.8	17.1	4.85	0.39	6.68	18.2	26.6	33.1	36.9	48.5	58.2	62.2	40.1
55	37.9	45.6	34.5	44.0	42.1	38.7	29.8	18.7	5.43	0.34	7.71	20.9	28.4	33.8	34.1	44.0	52.2	55.2	35.3
60	33.0	40.3	30.8	39.7	39.6	39.6	31.2	19.9	5.91	0.39	9.41	23.2	28.6	30.9	30.7	39.1	45.7	47.7	30.2
65	28.0	34.6	26.9	35.1	35.6	37.0	31.5	20.5	6.24	0.36	10.5	23.5	26.5	27.8	27.1	34.0	39.1	40.0	25.0
70	22.8	28.8	22.8	30.4	31.4	33.3	30.2	20.6	6.42	0.25	11.4	22.7	24.1	24.6	23.5	28.7	32.2	32.2	19.8
75	17.6	23.0	18.7	25.6	27.0	29.6	28.1	20.5	6.53	0.36	12.1	21.6	21.6	21.3	19.7	23.4	25.3	24.3	14.7
80	12.4	17.1	14.5	20.7	22.7	25.8	25.9	20.5	6.64	0.39	11.8	20.7	19.1	18.0	16.0	18.1	18.6	16.7	9.57
85	7.35	11.4	10.5	15.9	18.3	21.9	23.5	20.5	6.67	0.43	11.2	19.5	16.4	14.6	12.3	13.0	12.1	9.41	4.76
90	2.64	6.02	6.63	11.2	13.9	17.7	20.4	19.6	6.44	0.46	10.8	18.6	15.3	13.5	11.3	11.8	10.8	7.69	3.58
95	3.11	6.68	7.48	12.5	16.0	23.1	32.7	25.9	6.28	0.48	10.6	29.1	28.4	28.9	29.6	35.5	36.0	29.6	17.3
100	22.4	31.3	28.0	37.2	42.3	46.3	46.8	33.1	5.97	0.54	9.93	37.5	39.8	42.0	44.3	57.9	67.5	68.1	42.7
105	41.8	52.9	43.5	54.5	60.3	63.6	62.0	40.8	5.47	0.50	8.71	44.1	50.4	54.0	57.8	76.7	90.6	92.1	58.4
110	57.9	71.7	57.9	70.9	77.0	79.3	75.7	48.6	4.85	0.45	7.17	49.7	60.1	65.4	70.4	94.6	112	115	73.4
115	73.7	90.6	71.9	86.7	93.3	95.0	89.1	57.9	4.36	0.49	5.96	54.8	69.7	76.5	82.9	112	134	139	88.5
120	89.1	109	85.8	102	110	111	102	68.6	4.00	0.53	5.09	61.1	78.8	87.5	95.2	129	155	162	103
125	104	127	99.2	118	126	126	115	10.3	3.69	0.47	4.38	8.86	87.6	97.8	107	146	177	184	118
130	119	145	113	133	140	140	128	9.14	3.39	0.41	3.74	7.61	96.2	107	118	162	197	207	133
135	134	162	125	147	154	152	13.1	8.18	3.11	0.38	3.15	6.50	8.89	116	128	175	215	227	146
140	146	177	136	161	165	162	10.8	7.23	2.84	0.33	2.57	5.49	7.53	9.95	136	186	231	244	156
145	157	190	146	173	176	12.0	9.26	6.36	2.57	0.28	1.94	4.53	6.24	8.15	10.1	195	244	258	166
150	166	201	154	106	11.1	10.1	7.86	5.52	2.28	0.27	1.39	3.60	5.04	6.65	7.83	11.5	15.5	19.2	15.6
155	67.8	12.6	8.51	10.1	9.03	8.26	6.56	4.67	2.00	0.28	0.99	2.61	3.91	5.20	6.16	9.05	11.8	13.2	8.52
160	7.79	9.24	6.64	7.90	7.10	6.60	5.31	3.80	1.72	0.31	0.69	1.61	2.71	3.81	4.55	6.77	8.83	9.96	6.40
165	5.76	6.83	4.91	5.88	5.33	5.01	4.04	2.96	1.36	0.35	0.42	0.90	1.47	2.31	2.95	4.53	5.94	6.75	4.34
170	3.87	4.60	3.32	3.99	3.53	2.94	2.15	1.50	0.75	0.31	0.19	0.34	0.61	0.9466	1.25	2.06	2.84	3.36	2.15
175	2.06	2.45	1.37	1.34	1.03	0.87	0.65	0.52	0.31	0.20	0.16	0.14	0.15	0.14	0.18	0.32	0.49	0.63	0.36
180	0.07	0.09	0.07	0.09	0.09	0.09	0.10	0.11	0.12	0.16	0.18	0.18	0.17	0.18	0.16	0.18	0.21	0.23	0.08

C Range: 0 - 360DEG
C Interval: 10.0DEG
Test Speed: HIGH
Temperature: 25.3DEG
Operators: DOBAC
Test Date: 2017-11-28

γ Range: 0 - 180DEG
γ Interval: 1.0DEG
Test System: EVERFINE GO-2000B_V1 SYSTEM V1.0.260
Humidity: 65.0%
Test Distance: 6.960m [K=1.0000]
Remarks:

LUMINOUS DISTRIBUTION INTENSITY DATA

NAME: Niteo A	TYPE:	WEIGHT:
DIM.:	SPEC.:	SERIAL No.:
MFR.: DOBAC	SUR.:	PROTECTION ANGLE:

Table--2

UNIT: cd

C(DEG) γ (DEG)	190	200	210	220	230	240	250	260	270	280	290	300	310	320	330	340	350		
0	0.04	0.04	0.04	0.04	0.04	0.04	0.04	0.04	0.04	0.04	0.04	0.04	0.04	0.04	0.04	0.04	0.04		
5	1.43	0.57	0.52	0.34	0.34	0.26	0.25	0.19	0.18	0.17	0.13	0.17	0.57	0.9552	1.93	2.64	3.23		
10	7.64	5.11	5.56	4.19	3.27	1.63	0.73	0.22	0.17	0.16	1.31	2.55	3.79	4.67	7.14	9.37	10.8		
15	15.3	10.5	11.8	9.56	7.46	4.19	1.59	0.33	0.16	0.74	3.42	5.24	7.18	8.62	12.9	16.8	19.1		
20	23.4	16.3	18.5	15.5	12.6	7.82	3.32	0.45	0.14	1.96	5.59	8.05	10.8	12.8	18.9	24.7	27.9		
25	31.5	22.2	25.4	21.5	18.0	11.8	5.23	0.50	0.13	3.24	7.80	10.9	14.4	17.1	25.1	32.7	36.7		
30	38.9	27.6	31.9	27.6	23.5	16.0	7.84	0.77	0.12	4.52	10.0	13.8	18.2	21.4	31.3	40.6	45.5		
35	45.4	32.5	37.9	33.2	28.8	20.2	10.6	1.43	0.11	5.79	12.2	16.8	21.8	25.5	37.1	47.9	53.5		
40	50.6	36.5	43.1	38.3	33.8	24.3	13.4	1.95	0.11	7.03	14.4	19.6	25.2	29.4	42.3	54.5	60.5		
45	53.3	39.3	47.0	42.6	38.1	28.2	16.1	2.68	0.12	8.20	16.5	22.2	28.3	32.6	46.6	59.5	65.7		
50	48.7	37.6	48.4	45.5	41.7	31.6	18.7	3.82	0.12	9.30	18.4	24.5	30.9	35.1	49.5	62.4	66.3		
55	43.3	33.9	44.3	45.4	44.0	34.3	21.1	5.02	0.19	10.3	20.1	26.4	32.7	36.5	47.5	56.7	59.4		
60	37.7	30.0	39.7	41.2	43.7	36.2	23.0	6.14	0.38	11.1	21.5	27.6	33.0	33.5	42.8	50.5	52.1		
65	31.9	25.9	34.9	37.0	39.8	36.7	24.4	7.10	0.59	11.8	22.3	27.9	30.2	30.1	37.8	43.9	44.5		
70	26.0	21.9	30.1	32.6	35.9	34.5	25.0	7.72	0.77	12.1	22.5	26.0	27.2	26.7	32.7	37.2	36.7		
75	20.2	17.7	25.3	28.2	32.0	32.0	24.9	7.96	0.93	12.3	22.4	23.9	24.2	23.1	27.5	30.4	28.9		
80	14.5	13.6	20.4	23.8	28.1	29.5	25.0	8.24	1.07	12.6	22.2	21.8	21.1	19.4	22.3	23.5	21.2		
85	9.00	9.61	15.6	19.3	24.0	26.9	25.0	8.42	1.12	11.3	19.0	17.6	17.4	15.7	17.1	16.8	13.6		
90	7.53	8.12	13.5	16.7	21.2	24.2	23.7	7.87	1.05	11.3	18.0	15.6	14.4	12.0	12.0	10.4	6.46		
95	24.9	20.9	32.1	36.5	39.5	38.7	31.5	7.26	1.18	12.1	20.2	14.6	15.1	12.3	12.5	10.7	7.16		
100	53.8	41.9	51.7	54.0	55.6	52.3	36.9	6.43	1.28	13.0	34.1	31.0	28.8	30.8	38.0	39.3	36.8		
105	72.2	55.7	67.8	70.3	71.4	65.5	41.8	5.39	1.01	12.7	39.8	39.1	40.7	44.2	58.1	64.8	66.4		
110	90.0	69.0	83.0	85.5	85.5	77.4	45.9	3.98	0.87	15.3	46.9	51.5	55.4	56.9	76.8	87.5	91.3		
115	108	82.0	98.0	101	100.0	88.7	50.2	2.52	1.07	8.20	58.6	65.0	68.6	69.0	94.7	110	116		
120	125	95.0	113	116	114	99.7	11.0	1.56	0.73	6.51	66.4	76.1	80.5	81.1	112	131	139		
125	142	108	128	131	127	111	9.25	1.32	0.75	5.76	73.6	86.9	92.9	93.3	130	152	162		
130	159	121	141	144	139	23.7	7.89	0.59	0.92	5.39	9.10	97.7	105	105	147	174	185		
135	174	132	153	156	150	11.1	6.65	0.69	1.02	4.99	8.22	94.0	116	116	163	194	208		
140	187	141	164	167	12.6	9.31	5.54	0.86	1.02	4.45	7.45	8.90	117	126	178	212	226		
145	198	150	69.0	11.9	10.3	7.65	4.26	0.73	0.98	3.92	6.40	8.11	54.0	135	191	227	244		
150	13.0	9.31	10.7	9.53	8.29	6.10	2.90	0.57	0.95	3.43	5.44	6.79	8.15	9.27	202	241	258		
155	9.97	7.22	8.37	7.41	6.39	4.45	1.71	0.34	0.91	2.91	4.53	5.56	6.81	6.89	11.0	14.2	76.5		
160	7.42	5.37	6.15	5.41	4.46	2.68	1.07	0.20	0.86	2.42	3.68	4.43	5.34	6.07	7.00	11.0	12.0		
165	5.00	3.60	4.00	3.32	2.37	1.37	0.55	0.15	0.80	1.94	2.82	3.36	4.00	4.51	5.93	8.09	8.82		
170	2.38	1.64	1.66	1.34	0.95	0.50	0.20	0.09	0.61	1.35	1.95	2.32	2.72	3.05	4.23	4.22	5.88		
175	0.43	0.30	0.30	0.23	0.16	0.07	0.07	0.12	0.34	0.60	0.78	0.9351	1.15	1.40	2.13	2.91	3.14		
180	0.10	0.07	0.09	0.08	0.09	0.10	0.11	0.12	0.16	0.18	0.19	0.17	0.18	0.16	0.18	0.21	0.24		

C Range: 0 - 360DEG
C Interval: 10.0DEG
Test Speed: HIGH
Temperature: 25.3DEG
Operators: DOBAC
Test Date: 2017-11-28

γ Range: 0 - 180DEG
γ Interval: 1.0DEG
Test System: EVERFINE GO-2000B_V1 SYSTEM V1.0.260
Humidity: 65.0%
Test Distance: 6.960m [K=1.0000]
Remarks: